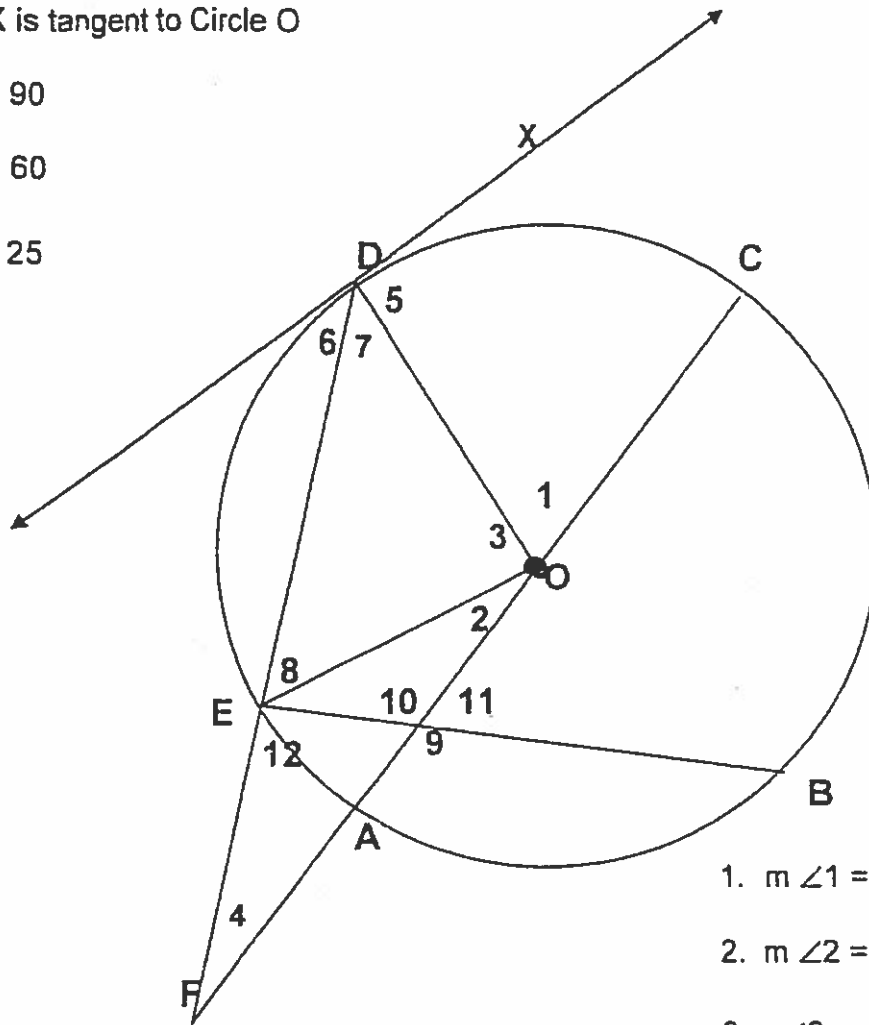


Line DX is tangent to Circle O

$m \widehat{BC} = 90$

$m \widehat{CD} = 60$

$m \widehat{EA} = 25$



1. $m \angle 1 =$ _____

2. $m \angle 2 =$ _____

3. $m \angle 3 =$ _____

4. $m \angle 4 =$ _____

5. $m \angle 5 =$ _____

6. $m \angle 6 =$ _____

7. $m \angle 7 =$ _____

8. $m \angle 8 =$ _____

9. $m \angle 9 =$ _____

10. $m \angle 10 =$ _____

11. $m \angle 11 =$ _____

12. $m \angle 12 =$ _____

Key

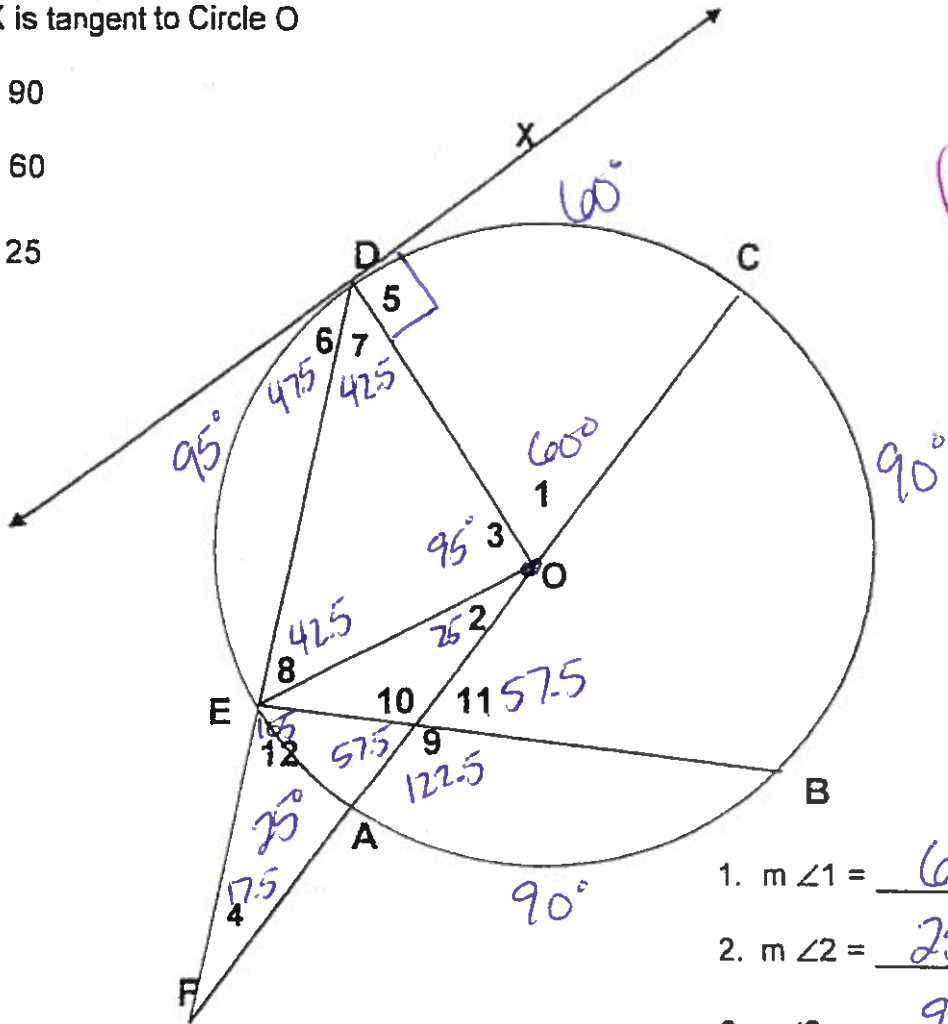
Line DX is tangent to Circle O

$m \widehat{BC} = 90$

$m \widehat{CD} = 60$

$m \widehat{EA} = 25$

(Teacher)



1. $m \angle 1 = \underline{60^\circ}$
2. $m \angle 2 = \underline{25^\circ}$
3. $m \angle 3 = \underline{95^\circ}$
4. $m \angle 4 = \underline{17.5^\circ}$
5. $m \angle 5 = \underline{90^\circ}$
6. $m \angle 6 = \underline{47.5^\circ}$
7. $m \angle 7 = \underline{42.5^\circ}$
8. $m \angle 8 = \underline{42.5^\circ}$
9. $m \angle 9 = \underline{122.5^\circ}$
10. $m \angle 10 = \underline{122.5^\circ}$
11. $m \angle 11 = \underline{57.5^\circ}$
12. $m \angle 12 = \underline{105^\circ}$

$$\frac{90+25}{2} = 57.5$$

$$\frac{60-25}{2} = 17.5$$